

Product Introduction

Thanks for you choose our Ultimate SMS Software.

Bulk SMS messaging is a mobile marketing communications channel that has grown rapidly in popularity over the past few years. SMS communication enables you to get your message to any mobile phone, whenever and wherever your contact may be. It's perfect for conducting effective mobile CRM (Customer Relationship Management), mobile marketing and internal communications.

USM Software provides you with a communication channel that is:

- Highly relevant in today's 'mobile' community,
- Cost-efficient,
- Instant,
- Reliable,
- Direct,
- Convenient, and able to complement your existing communication channels.

Function

- Easily create and send text messages from your Personal computer to mobile phones in one click.
- You can enter sender phone number manually or loads from contact file or can select range.
- No Limit of contacts in the list to send SMS.
- Can Export Inbox in Excel File.
- Concatenate Long SMS
- Can Sent Alert/Flash SMS.
- Can Send vCard / vCalander.
- Can Create Log of Sent sms's.
- No internet connection is required to send SMS.

System Requirement

- Pentium-class processor
- RAM (512 MB recommended)
- 50 Mb of free space

Supported operating system:

- Windows XP, Windows VISTA

Mobiles Connectivity:

- Can connect through any mobile phone device which install on computer through USB / Data Cable and appears on Computer's Phone & Modem properties as Modem with assigning any COM Port.

Software interface language:

- English / Russian

Install in Windows

First, Install the Dot Net Framework 2.0 in your Computer. To Download from internet click on following link.

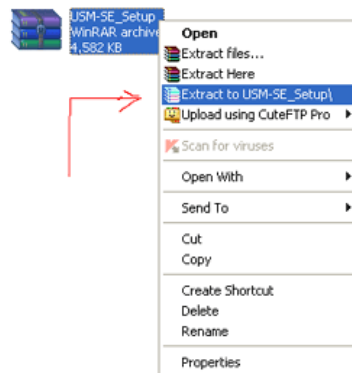
Downlaod .NET FrameWork from the Following Link:

[Microsoft .NET FrameWork DOWNLAOD](http://www.microsoft.com/downloads/details.aspx?familyid=0856eacb-4362-4b0d-8edd-aab15c5e04f5&displaylang=en)

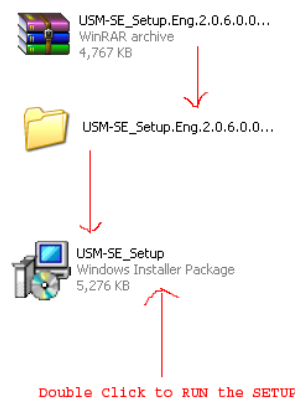
<http://www.microsoft.com/downloads/details.aspx?familyid=0856eacb-4362-4b0d-8edd-aab15c5e04f5&displaylang=en>

Extract the ZIP/RAR File

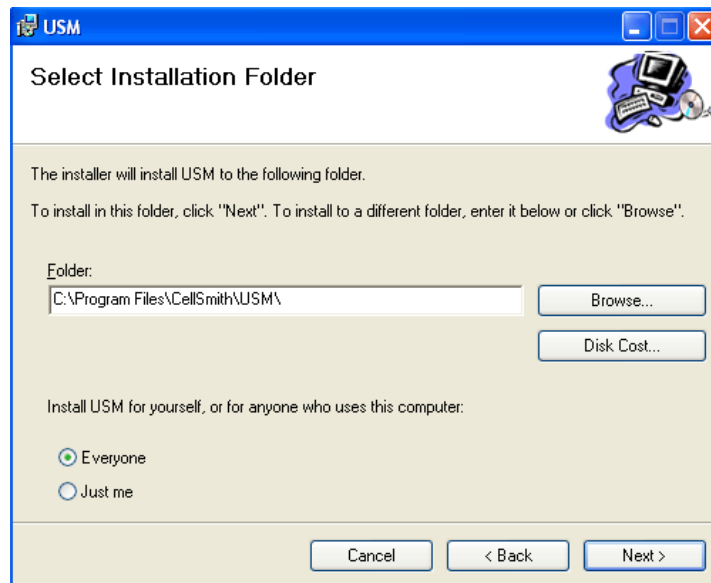
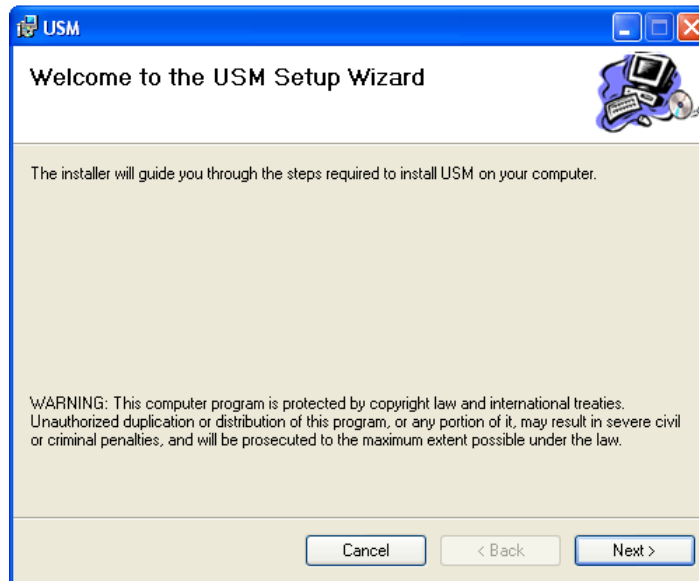
Extract the File to Run the Setup.

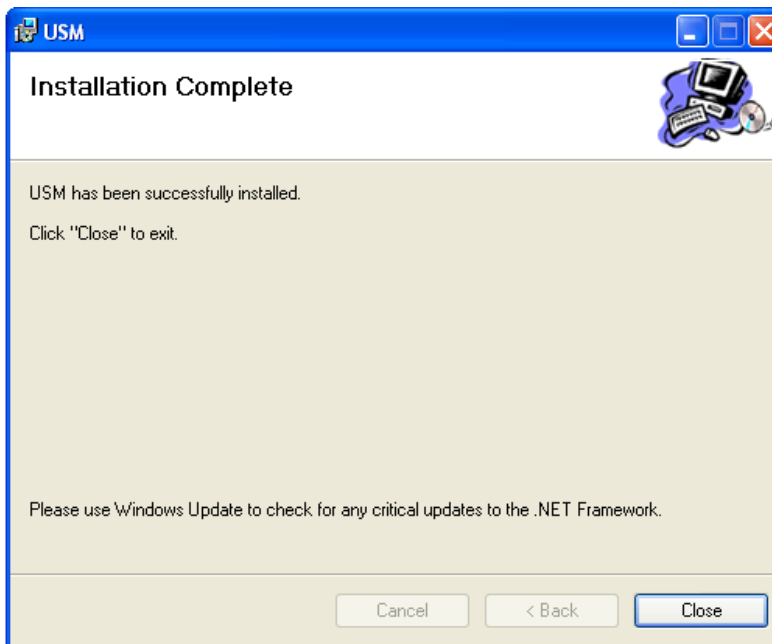
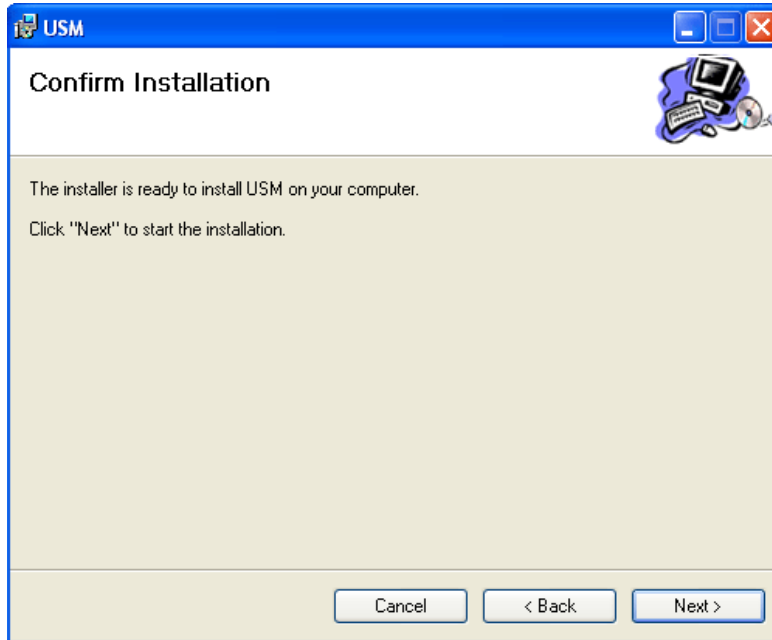


After extracting the zip/RAR file
Open the USM Folder and then
Double Click on USM Setup to
Install the SMS Software and
Follow the instructions.



Then Follow the instruction to install DEMO Version of USM.





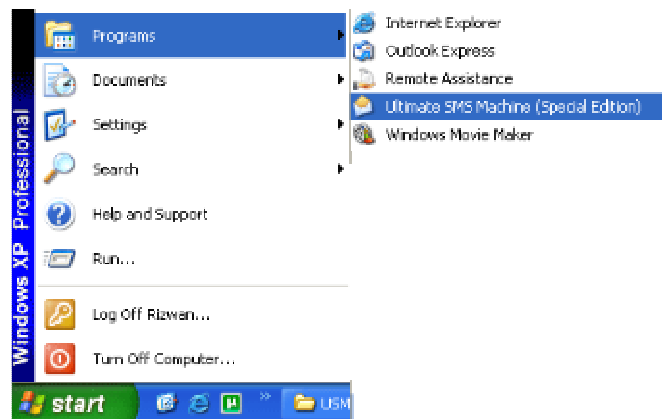
Then Restart computer

After installation complete and then you See ICONS appears on Desktop as like:-



3. 2 Start Up

1. When you have install the "USM" it will have a shortcut key in your desktop, you can choose it direct, or click it from "USM". (See the picture)



2. After the first Start up, it will appear this splash Screen.



Click on DEMO to evaluate this software.

If you like software and interested to purchase simply Send us Machine ID to its Registration Key generation. Our email id is for Key Activations is (bulksmsp@gmail.com).

3. Choose "Settings" to connect the Phone with SMS Software.

Select the port on which Mobile is attached and Click on Connect.

No need to edit other options.

Serial Port Settings

Port: Select Port

Baud Rate: 19200

Data Bits: 8

Parity: None

Stop Bits: 1

Flow Control: None

Connect

Disconnect

Other Settings

PIN:

SMSC:

Send Delay: 1 Seconds

Send Retry: 1

Timeout: 30 Seconds

Display incoming call information

Refresh

Apply

Network | Incoming SMS | Send SMS | WAP Push | vCard | vCalendar | Logging | Terminal | **Settings**

Status Screen

ERROR: You are not connected to any GSM device

4. Network information.

Network Information

Signal Strength:

Network: Reading... Please wait... Please wait...

Modem Information

Manufacturer: ???

Model: ???

Firmware Revision: ???

IMEI: ???

Battery Level: ???

Own Number: ??? Refresh

Network | Incoming SMS | Send SMS | WAP Push | vCard | vCalendar | Logging | Terminal | Settings

Status Screen

ERROR: You are not connected to any GSM device

5. Incoming SMS

Message Inbox

Message Memory: Enable concatenation Refresh inbox on new message
SIM Enable new message indication Auto delete after display
 Clean up message memory on refresh (i.e. delete smart-messages)

From	Message	Date/Time

Network | **Incoming SMS** | Send SMS | WAP Push | vCard | vCalendar | Logging | Terminal | Settings

Status Screen

ERROR: You are not connected to any GSM device

6. SEND SMS Options.

Message Settings

Send to a range

Operator Prefix: 0333 Starting Number: 6516700 Ending Number: 6516800

Send to a list

03336516711
03336516712
03336516713
03336516714
03336516715
03336516716
03336516717
03336516718
03336516719
03336516720

Send to a single number

03336516700

Send Message

Alert Message
 Message Delivery Report

Long Messages: Concatenate

Encoding: Default Alphabet

Validity Period: 24 Hour

Text Message: [0 / 0]

Network | Incoming SMS | **Send SMS** | WAP Push | vCard | vCalendar | Logging | Terminal | Settings

Status Screen

ERROR: You are not connected to any GSM device

7. WAP Push Option.

Send WAP Push

Send To (Phone No.):

URL:

Text Message:

Action:

Created:

Expiry:

Network | Incoming SMS | Send SMS | **WAP Push** | vCard | vCalendar | Logging | Terminal | Settings

Status Screen

ERRORR: You are not connected to any GSM device

8. Send vCard Option.

Send vCard To (Phone No.):

Contact Name

First Name:

Middle Name:

Last Name:

Telephone

Home:

Business:

Mobile:

Comment

Home

Street Address:

City:

State:

Country:

ZIP:

Business

Job Title:

Company:

Street Address:

City:

State:

Country:

ZIP:

Internet

Email:

Website:

Send vCard File (.vcf file)

Network | Incoming SMS | Send SMS | WAP Push | **vCard** | vCalendar | Logging | Terminal | Settings

Status Screen

ERRORR: You are not connected to any GSM device

9. Send vCalendar Option.

Send vCalendar

<p>Send To (Phone No.): <input type="text"/></p> <p>Start Date & Time: <input type="text" value="08 Mar 2007, 05:13:43 PM"/></p> <p><input checked="" type="radio"/> End Date & Time: <input type="text" value="08 Mar 2007, 05:15:06 PM"/></p> <p><input type="radio"/> Duration: <input type="text" value="30"/> Minutes</p>	<p>Event Location: <input type="text"/></p> <p>Event Description: <input type="text"/></p> <p>Event Summary: <input type="text"/></p> <p style="text-align: center;"><input type="button" value="Send vCalendar"/></p>
--	--

Send vCalendar File (.vcs file)

Network | Incoming SMS | Send SMS | WAP Push | vCard | **vCalendar** | Logging | Terminal | Settings

Status Screen ?

ERROR: You are not connected to any GSM device

10. Logging Option.

Debug Mode

Enable Debug Mode (Error Messagebox)

Log Options

Log Type:

Log Folder:

Network | Incoming SMS | Send SMS | WAP Push | vCard | vCalendar | **Logging** | Terminal | Settings

Status Screen ?

ERROR: You are not connected to any GSM device